



Extensive range of interior MDF mouldings



An extensive range of interior mouldings supplied unprimed or with two coats of water based primer.

#### Technical information

- FSC® certified
- Conforms to EN 622-5
- CARB 2 compliant
- Fire resistant options tested to Euro Class D





## SAM offers profiles to suit any decor style.

- Skirting
- Architrave
- Skirting & architrave blocks
- Windowboard
- Door linings & casings
- Stair accessories

Core profiles are detailed in this brochure.  
If your requirements are bespoke please get in touch.



## Why choose MDF for your interior mouldings?

- Easy to cut and install
- Resistant to warping and swelling
- Free from defects and knots
- Moisture resistant
- Low maintenance
- Smooth surfaces for painting
- Consistent quality
- Affordable



**Fairfields & Harberton Housing  
Developments**  
Lisburn, Northern Ireland



“

Blue Horizon is delighted to have included SAM primed mouldings in our Fairfields and Harberton developments. They have helped to emanate some of the style, heritage and architectural details featured in our exclusive homes.

”

SAM worked with Blue Horizon Developments on their exclusive Fairfields and Harberton luxury homes projects.

The developments required internal mouldings of an exceptional standard that incorporated the heritage details of the Malone Conservation Area.

SAM manufactured bespoke skirting and architrave for the projects and offered additional support through site visits, bespoke CAD drawings and samples.

# Skirting & Architrave

Moisture resistant



Code                      **SAM01**  
Square Edge                      **SAM09**  
Torus                      **SAM10**  
Moulded

## Thicknesses available

12mm	•		•
14.5mm	•	•	•
18mm	•	•	•
22mm	•		
25mm	•		
30mm	•		

## Widths available

32mm	•		
44mm	•	•	
57mm	•	•	•
69mm	•	•	•
94mm	•	•	•
119mm	•	•	•
144mm	•	•	•
169mm	•	•	•
194mm	•	•	•

## Other finishes available

Unprimed	SAM01	SAM09	SAM10
Fully finished	SAM1447 - 2mm radius	SAM1440	SAM1449
Wrapped	SAM1447 - 2mm radius	SAM1440	SAM1449

## Lengths available

	12mm	14.5mm	18mm	22mm	25mm	30mm
Moisture resistant	5.49	4.2, 5.49	4.2, 5.49	5.49	3.66, 5.1, 5.49	4.19, 5.1



Code                      **SAM22**  
Chamfer and Round                      **SAM23**  
Pencil Round One Edge                      **SAM24**  
Pencil Round Two Edge

## Thicknesses available

12mm		•		•
14.5mm	•	•		•
18mm	•	•		•
22mm				
25mm				
30mm				

## Widths available

32mm				
44mm	•	•		•
57mm	•	•		•
69mm	•	•		•
94mm	•	•		•
119mm	•	•		•
144mm	•	•		•
169mm	•	•		•
194mm	•	•		•

## Other finishes available

Unprimed	SAM22	SAM23	SAM24
Fully finished	SAM1451	SAM1443	SAM1444
Wrapped	SAM1451	SAM1443	SAM1444

## Lengths available

	12mm	14.5mm	18mm	22mm	25mm	30mm
Moisture resistant	5.49	4.2, 5.49	4.2, 5.49	5.49	3.66, 5.1, 5.49	4.19, 5.1

# Skirting & Architrave

Moisture resistant



Code                      **SAM27**  
Ovolo                      **SAM29**  
Bullnosed                      **SAM81**  
Ogee

## Thicknesses available

12mm		•	
14.5mm	•	•	•
18mm	•	•	
22mm			
25mm			
30mm			

## Widths available

32mm			
44mm	•	•	•
57mm	•	•	•
69mm	•	•	•
94mm	•	•	•
119mm	•	•	•
144mm	•	•	•
169mm	•	•	•
194mm	•	•	•

## Other finishes available

Unprimed	SAM27	SAM29	SAM81
Fully finished	SAM2011	SAM1455	N/A
Wrapped	SAM2011	SAM1455	N/A

## Lengths available

	12mm	14.5mm	18mm	22mm	25mm	30mm
Moisture resistant	5.49	4.2, 5.49	4.2, 5.49	5.49	3.66, 5.1, 5.49	4.19, 5.1



Code                      **SAM82**  
Ogee                      **SAM93**  
Ogee                      **SAM97**  
Ogee

## Thicknesses available

12mm			•
14.5mm		•	•
18mm	•	•	•
22mm			
25mm			
30mm			

## Widths available

32mm			
44mm			•
57mm	•	•	•
69mm	•	•	•
94mm	•	•	•
119mm	•	•	•
144mm	•	•	•
169mm	•	•	•
194mm	•	•	•

## Other finishes available

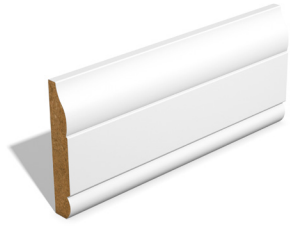
Unprimed	SAM82	SAM93	SAM97
Fully finished	N/A	SAM1441	SAM1454
Wrapped	N/A	SAM1441	SAM1454

## Lengths available

	12mm	14.5mm	18mm	22mm	25mm	30mm
Moisture resistant	5.49	4.2, 5.49	4.2, 5.49	5.49	3.66, 5.1, 5.49	4.19, 5.1

# Skirting & Architrave

Moisture resistant



**SAM98**  
Ogee and Bead



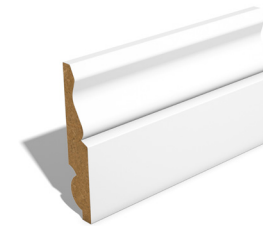
**SAM502**  
Hockey Stick



**SAM600**  
Grooved  
Grooved widths:  
5, 10, 15mm



**SAM601**  
Chamfered  
Angles: 10, 15,  
20, 45 degrees



**SAM2156**  
Dual Purpose  
Ogee / Torus



**SAM2574**  
Dual Purpose  
Chamfered / Bullnosed

Code

## Thicknesses available

12mm	•	•
14.5mm	•	•
18mm	•	•
22mm		
25mm		
30mm		

## Widths available

32mm		•
44mm	•	•
57mm	•	•
69mm	•	•
94mm	•	•
119mm	•	•
144mm	•	•
169mm	•	•
194mm	•	•

## Other finishes available

Unprimed	SAM98	SAM502	SAM601
Fully finished	SAM1453	SAM502	N/A
Wrapped	SAM1453	SAM502	N/A

## Lengths available

	12mm	14.5mm	18mm	22mm	25mm	30mm
Moisture resistant	5.49	4.2, 5.49	4.2, 5.49	5.49	3.66, 5.1, 5.49	4.19, 5.1

Code

## Thicknesses available

12mm	•	
14.5mm	•	•
18mm	•	•
22mm		
25mm		
30mm		

## Widths available

32mm		
44mm	•	
57mm	•	
69mm	•	
94mm	•	•
119mm	•	•
144mm	•	•
169mm	•	•
194mm	•	•

## Other finishes available

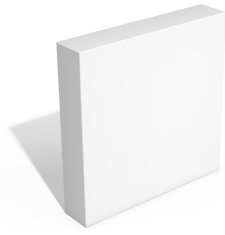
Unprimed	SAM601	SAM2156	SAM2574
Fully finished	SAM1903	N/A	N/A
Wrapped	SAM1903	N/A	N/A

## Lengths available

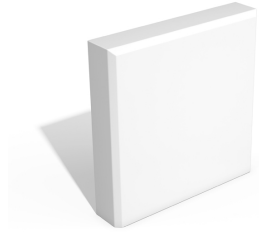
	12mm	14.5mm	18mm	22mm	25mm	30mm
Moisture resistant	5.49	4.2, 5.49	4.2, 5.49	5.49	3.66, 5.1, 5.49	4.19, 5.1

# Skirting & Architrave Blocks

Moisture resistant



**AR01**  
Plain Face Square Edge Architrave Block



**AR01 (3mm)**  
Plain Face Chamfered Edge Architrave Block

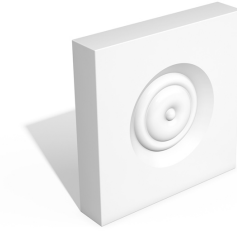


**AR02**  
Bullseye Square Edge Architrave Block

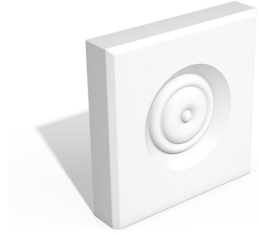
Code

Thicknesses available

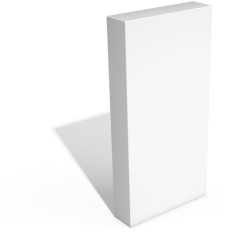
12mm			
14.5mm			
18mm	•	•	•
22mm	•	•	•
25mm	•	•	•
30mm	•	•	•



**AR06**  
Tulip Large Square Edge Architrave Block



**AR06 (3mm)**  
Tulip Large Chamfered Edge Architrave Block



**SK01**  
Plain Face Square Edge Skirting Block

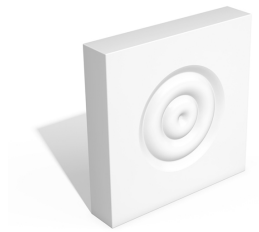
Code

Thicknesses available

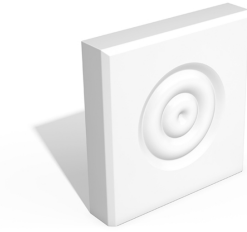
12mm			
14.5mm			
18mm	•	•	•
22mm	•	•	•
25mm	•	•	•
30mm	•	•	•



**AR02 (3mm)**  
Bullseye Chamfered Edge Architrave Block



**AR04**  
Rose Small Square Edge Architrave Block



**AR04 (3mm)**  
Rose Small Chamfered Edge Architrave Block

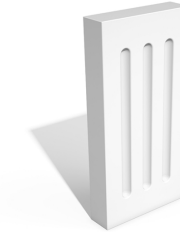
Code

Thicknesses available

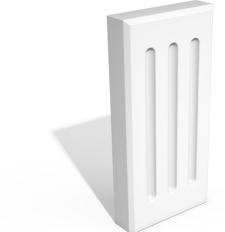
12mm			
14.5mm			
18mm	•	•	•
22mm	•	•	•
25mm	•	•	•
30mm	•	•	•



**SK01 (3mm)**  
Plain Face Chamfered Edge Skirting Block



**SK08**  
Fluted Square Edge Skirting Block



**SK08 (3mm)**  
Fluted Chamfered Edge Skirting Block

Code

Thicknesses available

12mm			
14.5mm			
18mm	•	•	•
22mm	•	•	•
25mm	•	•	•
30mm	•	•	•

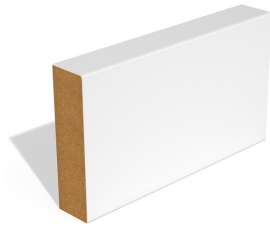
All skirting and architrave blocks are also available unprimed.

Variable widths available. Please contact the SAM internal sales team.



# Door Linings & Casings

Moisture resistant



**SAM04**  
Door Lining / Stop



**SAM730**  
Fire Check Lining

Code

## Thicknesses available

12mm	•	
14.5mm	•	
18mm	•	
22mm	•	
25mm	•	•
30mm	•	•

## Widths available

Variable	19mm upwards	55mm upwards
----------	--------------	--------------

## Other finishes available

Unprimed	SAM04	SAM730
Fully finished	SAM1447 (2mm radius)	SAM730
Wrapped	SAM1447 (2mm radius)	N/A

## Lengths available

	12mm	14.5mm	18mm	22mm	25mm	30mm
<b>Moisture resistant</b>	5.49	4.2, 5.49	4.2, 5.49	5.49	3.66, 5.1, 5.49	4.19, 5.1



**SAM02**  
Door Casing



**SAM654**  
Fire Check Casing

Code

## Thicknesses available

12mm		
14.5mm		
18mm		
22mm		
25mm		
30mm	•	•

## Widths available

Variable	55mm upwards	55mm upwards
----------	--------------	--------------

## Other finishes available

Unprimed	SAM02	SAM654
Fully finished	N/A	N/A
Wrapped	SAM1452	N/A

## Lengths available

	12mm	14.5mm	18mm	22mm	25mm	30mm
<b>Moisture resistant</b>	5.49	4.2, 5.49	4.2, 5.49	5.49	3.66, 5.1, 5.49	4.19, 5.1

# Windowboard

Moisture resistant



Code	SAM50 Windowboard	SAM52 Windowboard
------	----------------------	----------------------

## Thicknesses available

12mm		
14.5mm		
18mm	•	
22mm		•
25mm		•
30mm	•	

## Widths available

57mm		
69mm		
94mm	•	•
119mm	•	•
144mm	•	•
169mm	•	•
194mm	•	•
219mm	•	•
244mm	•	•

## Other finishes available

Unprimed	SAM50	SAM52
Fully finished	SAM1445	SAM1446
Wrapped	SAM1445	SAM1446

## Lengths available

	12mm	14.5mm	18mm	22mm	25mm	30mm
<b>Moisture resistant</b>	5.49	4.2, 5.49	4.2, 5.49	5.49	3.66, 5.1, 5.49	4.19, 5.1

# Stair accessories

Standard grade



Code	SAM55 Tread	SAM56 Tread	SAM01/00 Riser
------	----------------	----------------	-------------------

## Thicknesses available

12mm			•
14.5mm			•
18mm			
22mm	•		
25mm		•	
30mm			

## Widths available

Variable	94mm upwards	94mm upwards	94mm upwards
----------	--------------	--------------	--------------

## Lengths available

	12mm	14.5mm	18mm	22mm	25mm	30mm
<b>Standard grade</b>	3.05	2.44, 3.05	2.44, 3.05	2.44, 3.05	2.44, 3.05	2.44, 3.05

SAM manufactures flat pack stair kits including straight flight and left or right winders and accessories including treads and risers. These products are available unprimed and come as standard grade MDF. Treads and risers can be manufactured to bespoke specifications. For more information get in touch.

Your SAM distributor is:



t: +44 (0)28 9442 8288  
e: [team@samonline.co.uk](mailto:team@samonline.co.uk)

[samonline.co.uk](http://samonline.co.uk)